



STATE OF ARKANSAS

**STATEWIDE
SOLID WASTE
MANAGEMENT PLAN**

EFFECTIVE DATE
NOVEMBER 1, 2003

ADEQ

ARKANSAS
Department of Environmental Quality



LETTER FROM THE DIRECTOR

Dear Arkansans:

I am pleased to present the Statewide Solid Waste Management Plan for the State of Arkansas. It provides a historical view of the beautiful State that we call home, a current view of the diverse services our agency provides, and ways we can protect and improve our environment.

The 2001 General Assembly required the Arkansas Department of Environmental Quality to develop the first ever Statewide Solid Waste Management Plan. Members of our Department and Regional Solid Waste Management Districts across the State met over several months identifying issues that need to be developed, changed, and redefined. The Plan presented herein provides you with our progress towards addressing issues identified in these meetings. The Plan focuses on solid waste management issues within our borders.

I'm excited about the work we have done. I'm excited and encouraged by the partnerships that we have developed and that we will continue to develop as we implement this plan.

The key to improving Arkansas' environment lies not only with the Department, but with Arkansans themselves. While this report cannot measure the growing interest and concern our citizens have in their environment, I can assure you that more and more Arkansans are taking a proactive interest in the State's environment. For both the Department's Solid Waste Management Division and the Regional Solid Waste Management Districts, the Plan presents the opportunity to establish goals, evaluate current services, develop action plans, and commit to completion dates.

Along with the Department's 10-year strategic plan and with our website, this Plan puts additional environmental data into the hands of our citizens than ever before. Information, education, and knowledge help people to understand the challenges facing our State's environment.

It is my sincere hope that by providing this Statewide Solid Waste Management Plan and by utilizing other vital environmental information sources, we can work together, as public entities and private citizens, to improve the environment throughout Arkansas.

I hope you enjoy the Plan and I encourage you to share it with others. As with every product from our Department, we invite your comments and suggestions.

A handwritten signature in black ink that reads "Marcus C. Devine". The signature is written in a cursive style with a large, stylized "M" and a flourish at the end.

Marcus C. Devine
Director

Acknowledgements

The Director of the Arkansas Department of Environmental Quality wishes to acknowledge the following Statewide Solid Waste Management Plan Task Team Committee Members and other persons and groups for their contributions of time and expertise during the development of this document.

STATEWIDE SOLID WASTE MANAGEMENT PLAN TASK TEAM COMMITTEE MEMBERS

Team Members from the Arkansas Department of Environmental Quality:

Susan Speake, Task Team Coordinator and Programs Branch Manager,
Solid Waste Management Division
Becky Keogh, Deputy Director
Steve Martin, Chief, Solid Waste Management Division
Mike Bonds, Attorney, Legal Division
Pat Henry, Planning Section Manager, Solid Waste Management Division
Harry Elliott, Enforcement Branch Manager, Solid Waste Management Division
Robert Hunter, Recycling Branch Manager, Solid Waste Management Division
Chrissy Heider, Administrative Assistant, Technical Branch, Solid Waste Management Division
Doug Szenher, Public Outreach Section Manager, Customer Service Division
Kevin Pierson, Former Program Support Manager, Director's Office
Rodger Payne, Former Engineer PE, Technical Branch, Solid Waste Management Division
Dennis John Burks, Former Chief, Solid Waste Management Division

Team Members from the Regional Solid Waste Management Districts:

Bill Lord, Director, Northwest Arkansas Regional Solid Waste Management District
Richard Spelic, Director, East Arkansas Regional Solid Waste Management District
John Roberts, Director, Pulaski County Regional Solid Waste Management District
Steven Parker, Director, Tri-County Regional Solid Waste Management District
David Shewmaker, Former Director, Southwest Regional Solid Waste Management District

OTHER CONTRIBUTORS

Arkansas Department of Environmental Quality Staff:

Mary Leath, Chief Deputy Director
Geof Little, Technical Branch Manager, Solid Waste Management Division
Richard Robinette, Marketing Manager, Solid Waste Management Division
Elizabeth Hoover, Waste Tire Program Manager, Solid Waste Management Division

Others:

Ron Smith, Director, West River Valley Regional Solid Waste Management District
Joe Ball, Director, Upper-Southwest Arkansas Regional Solid Waste Management District
Jan Smith, White River Arkansas Regional Solid Waste Management District
Glen Bell, Director, Southeast Arkansas Regional Solid Waste Management District
Stacy Murry, East Arkansas Regional Solid Waste Management District
Suzanne Hirrell, University of Arkansas Cooperative Extension Service
Randy Thurman, Arkansas Environmental Federation
Charlie Wood, Formerly with East Arkansas Regional Solid Waste Management District

The task team wishes to express appreciation to the cities, counties, Regional Solid Waste Management Districts, and industry that provided responses and comments to the Solid Waste Survey.

"Honest differences of views and honest debate are not disunity. They are the vital process of policy-making among free men."

Herbert Hoover

Some of the photos in the Plan were provided by the Arkansas Department of Parks and Tourism.

PART ONE
STATEWIDE SOLID WASTE MANAGEMENT PLAN
FOR THE STATE OF ARKANSAS

PART TWO
MINIMUM REQUIREMENTS FOR
REGIONAL SOLID WASTE MANAGEMENT PLANS

ADMINISTERED BY THE
ARKANSAS DEPARTMENT OF ENVIRONMENTAL QUALITY
SOLID WASTE MANAGEMENT DIVISION
Post Office Box 8913
Little Rock AR 72219-8913
Phone (501) 682-0602 Fax (501) 682-0611 www.adeq.state.ar.us

PART ONE

STATEWIDE SOLID WASTE MANAGEMENT PLAN

FOR THE STATE OF ARKANSAS

PART ONE

STATEWIDE SOLID WASTE MANAGEMENT PLAN FOR THE STATE OF ARKANSAS

TABLE OF CONTENTS

CHAPTER ONE – Activities Analysis

Section 1.101 Overview

- A. History
- B. Current

Section 1.102 Organization and Administration

- A. Commission
- B. Department
- C. Division
- D. Districts

Section 1.103 Revenue Resources

- A. Permit Fees
- B. Landfill Disposal Fees
- C. Waste Tire Fees
- D. Licensing Fees

Section 1.104 Demographics

- A. Planning Area
- B. Population
- C. Industry
- D. Facilities
- E. Volumes
- F. Flow
- G. Economic Impact

Section 1.105 Current Services

- A. Collection
- B. Disposal
- C. Recycling
- D. Waste Reduction
- E. Special Materials
- F. Education and Public Awareness
- G. Other Services

CHAPTER TWO – Action Plan

Section 1.201 Mission Statement

Section 1.202 Executive Summary

- A. Strategies
- B. Outlook
- C. Effective Dates

Section 1.203 Goals

- A. Departmental Land Objectives
- B. Solid Waste Division's Goals
- C. Statewide Plan's Goal Areas
 1. Collection
 2. Disposal
 3. Recycling
 4. Waste Reduction
 5. Special Materials
 6. Education and Public Awareness
 7. Other Goals

Section 1.204 Goal Areas – Objectives

- A. Collection
- B. Disposal
- C. Recycling
- D. Waste Reduction
- E. Special Materials
- F. Education and Public Awareness
- G. Other Objectives

Section 1.205 Administrative

- A. Plan Implementation
- B. Implementation Timetable
- C. Funding

Section 1.206 Legislative Studies

Appendices

PART ONE

STATEWIDE SOLID WASTE MANAGEMENT PLAN For the State of Arkansas

CHAPTER ONE — ACTIVITIES ANALYSIS

Section 1.101 Overview

A. History

Properly designed and adequately financed solid waste management systems are necessary for Arkansans to have environmentally safe, sufficient and viable means of collecting and disposing of solid wastes.

The Arkansas State Legislature in 1971 recognized this fact and created the Solid Waste Management Act (Act 237, codified as A.C.A. §8-6-201 *et seq.*) with the stated purposes to protect the public health and welfare, prevent the spread of disease and creation of nuisances, conserve natural resources, and enhance the beauty and quality of the environment.

Act 870 of 1989, codified as A.C.A. §8-6-701 *et seq.*, established the original eight (8) Regional Solid Waste Planning Districts that became the foundation for the current sixteen (16) Regional Solid Waste Management Districts.

From a Governor-appointed task force that studied solid waste issues for the State of Arkansas, over two-dozen solid waste related bills were introduced during the 1991 General Assembly.

Act 752 of 1991, an amendment to A.C.A. §8-6-701 *et seq.*, enabled Planning Districts to become Regional Solid Waste Management Districts with greatly expanded authority and responsibility.

A major requirement of these mandates is that all local governments plan for the development of solid waste management systems.

The original guidelines for regional solid waste management plans, dated 1988, required a plan that had an "orderly narrative explanation of the collection and disposal of all solid waste generated within the territorial boundaries of a local government".

These guidelines proved to be a practical guide to assist local governments in fulfilling the requirements of the applicable laws while securing environmentally and financially sound operations of solid waste management systems.

The plans the Regional Solid Waste Management Boards provided pursuant to the 1988 guidelines served an integral purpose in the early days of the development of regional solid waste management systems throughout Arkansas. Subsequent to the original plan was the requirement for periodic reporting of Needs Assessments by each District, which also served to update demographic and service information contained in the original plan.

B. Current

In 2001, Act 1376 of 2001 codified as A.C.A. §8-6-1901 *et seq.*, specifically charged the Arkansas Department of Environmental Quality with developing a comprehensive statewide solid waste management plan and minimum requirements for the development of new waste management plans by Regional Solid Waste Management Boards.

A.C.A. §8-6-1904. "Development and implementation. (a) The Arkansas Department of Environmental Quality shall develop the Statewide Solid Waste Management Plan to establish minimum requirements for all regional solid waste management plans, including requirements for:

- a. Strategic Planning;*
- b. Reporting;*
- c. Public Notice and Participation;*
- d. Services; and*
- e. Solutions to Problems and Issues."*

Act 1376 of 2001 was developed and presented to the 83rd General Assembly for adoption due to the following issues:

1. A comprehensive Statewide Solid Waste Management Plan was needed.
2. Regional Solid Waste Management Plans were outdated.
3. The Environmental Protection Agency's Subtitle D in 1994 significantly changed the way the landfills are built and maintained.
4. Solid waste management actions and activities have grown and developed by leaps and bounds over the past decade, with countless innovative and proactive advancements, giving many new meanings to old ways of doing the business of solid waste management.
5. Since 1988, numerous pieces of state legislation on various issues regarding solid waste management have been codified, along with resulting new regulations, or amendments to old regulations.
6. With these advents, came many new solid waste management related programs and/or different methodologies of managing old programs.

Section 1.102 Organization and Administration

A. Commission

The Arkansas Pollution Control and Ecology Commission was established in 1949 as part of the Arkansas Water Pollution Control Act (Act 472 of 1949).

The Arkansas Pollution Control and Ecology Commission is the environmental policy-making body for Arkansas. With guidance from the Governor, the Legislature, the EPA and others, the Commission determines the environmental policy for the state and the Arkansas Department of Environmental Quality implements those policies.

The Arkansas Pollution Control and Ecology Commission and the Arkansas Department of Environmental Quality work closely together. However, they are each distinctly different.

The Arkansas Pollution Control and Ecology Commission is comprised of 13 members, six representing state agencies and seven appointed by the Governor. The six agency representatives are directors—or their designee—of the:

- Arkansas Department of Health
- Arkansas Game and Fish Commission
- Arkansas Forestry Commission
- Arkansas Soil and Water Conservation Commission
- Arkansas Oil and Gas Commission
- Arkansas Geology Commission

The seven other members of the Arkansas Pollution Control and Ecology Commission represent each of the four congressional districts in the state. Each district must have at least one representative on the Commission, but no more than two representatives.

B. Department

The Arkansas Department of Environmental Quality strives to protect and enhance the state's environment through regulatory programs, proactive programs and educational activities. While this overview focuses primarily on the Department's regulatory activities, almost every area of the agency also devotes time and personnel to outreach and education efforts.

The Arkansas Department of Environmental Quality's Little Rock office includes seven buildings near Interstate 30 and Geyer Springs. Area offices and inspectors are located throughout the state.

The Arkansas Department of Environmental Quality is organized into six regulatory divisions that focus on the protection of specific elements of the environment:

- Air
- Hazardous Waste
- Mining
- Regulated Storage Tanks
- Solid Waste
- Water

There are two environmental assistance divisions that offer direct support to the public, other divisions and environmental stakeholders to protect the environment:

- Customer Service
- Environmental Preservation

And five internal divisions support the day-to-day operations of the agency:

- Computer Services
- Fiscal
- Management Services
- Legal
- Technical Services

Up-to-date charts can be located on the Arkansas Department of Environmental Quality's website www.adeg.state.ar.us.

C. Division

The Solid Waste Management Division's staff regulates the handling, processing, recycling and disposal of non-hazardous solid waste. The Division is divided into four branches:

The Enforcement Branch offers compliance assistance, investigates complaints and takes enforcement actions. The Branch has eight solid waste field inspectors with designated inspection districts.

See **Appendix 1** for a map of the inspector districts, current as of date of this publication.

Up-to-date maps can be located on the Arkansas Department of Environmental Quality's website www.adeg.state.ar.us.

The Programs Branch handles the budget for the division, collects fees, administers programs for grants, licensing, and waste tire management, audits financial programs, qualifies financial records required of solid waste management facility permittees and oversees planning documents required of Regional Solid Waste Management Districts.

The Technical Branch is responsible for facility permitting, corrective action and facility closure and post-closure activities. The Division's Engineers and Geologists are under the umbrella of the Technical Branch.

The Recycling and Market Development Branch includes two related, but distinct, programs. **The Recycling Section** administers a grants program, attends Regional Solid Waste Management Board meetings and conducts programs to encourage recycling.

See **Appendix 2** for a map of the recycling coordinator districts.

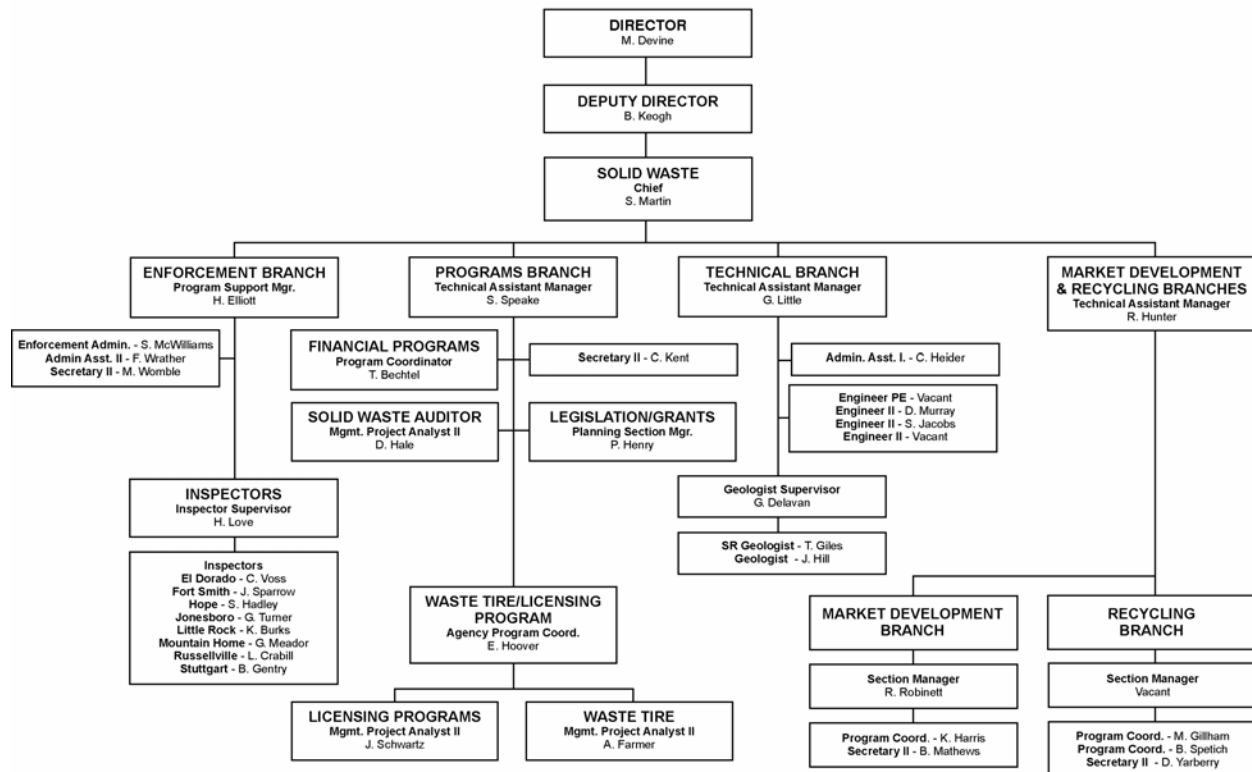
The Market Development Section certifies tax credits for the purchase of business equipment that recycles waste and develops markets for recyclable materials.

The following is an organizational chart, current as of date of publication.

Up-to-date charts can be located on the Arkansas Department of Environmental Quality's website www.adeg.state.ar.us.

ARKANSAS DEPARTMENT OF ENVIRONMENTAL QUALITY

Solid Waste Management Division Personnel Chart

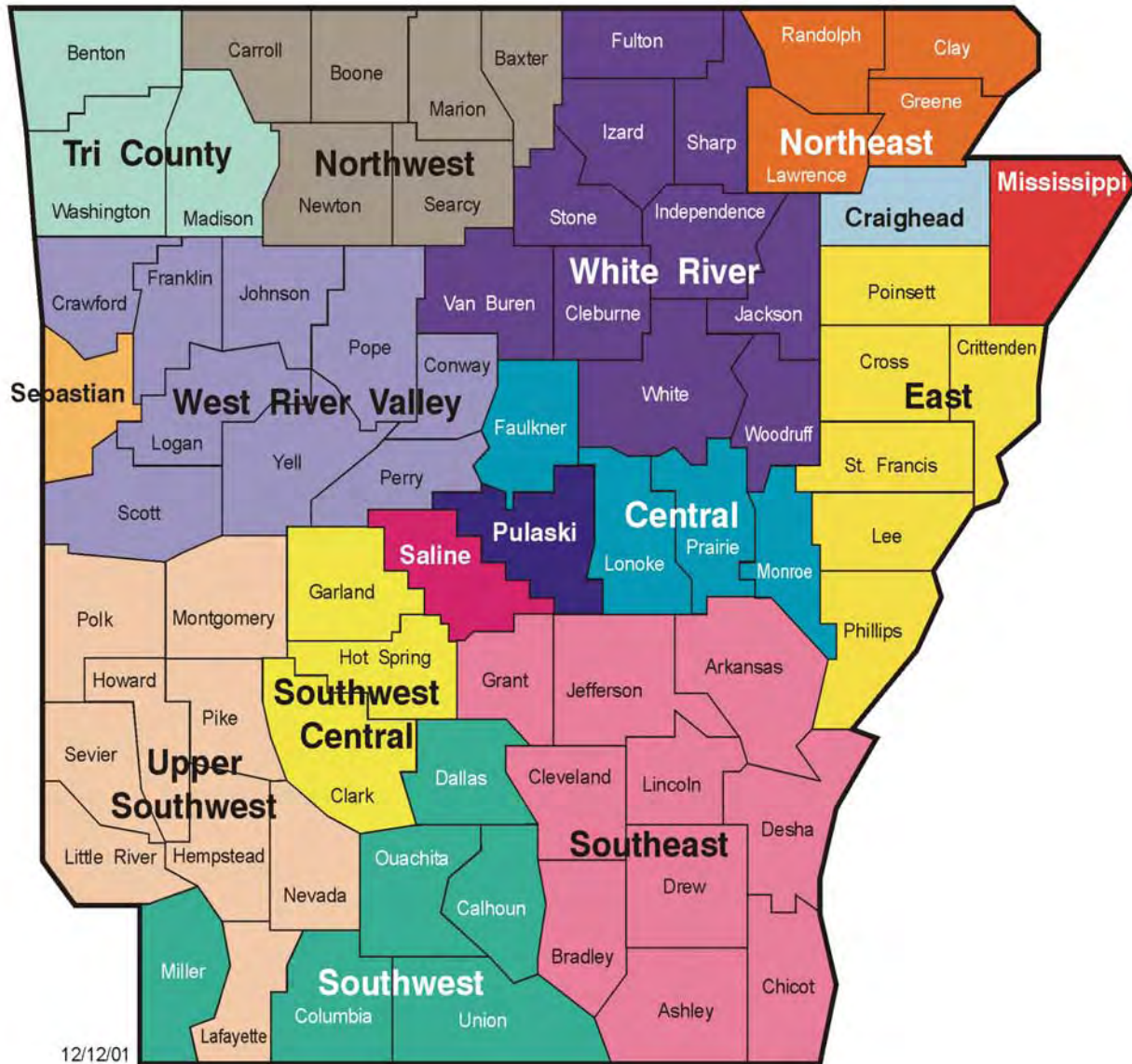


D. Districts

The Regional Solid Waste Management Boards of the sixteen current Regional Solid Waste Management Districts, acting under the authority of A.C.A. §8-6-701 *et seq.*, are given broad authority and responsibility with regards to local solid waste management actions and activities. The individual Boards are charged with developing plans for their District that will define and describe these local actions and activities, and with providing such plans to the Arkansas Department of Environmental Quality for approval.

The following is a map of the Regional Solid Waste Management Districts, current as of this publication. Up-to-date maps, names of board chairs and staff contact personnel, mailing addresses and contact numbers can be located on the Arkansas Department of Environmental Quality's website www.adeq.state.ar.us.

Regional Solid Waste Management Districts



Number of Counties Each District

Central	4
East	6
Tri County	3
Northeast	4
Northwest	6
Southeast	10
Southwest	6
Southwest Central	3
Upper-Southwest	9
West River Valley	9
White River	10

Following are Single Counties

- Craighead
- Pulaski
- Mississippi
- Saline
- Sebastian

Section 1.103 Revenue Resources

The Arkansas Department of Environmental Quality receives funds for Solid Waste Management Division related activities from the following State of Arkansas legislated fee programs. Listed below are the programs and the regulatory authority of each. A complete copy of each regulation can be located on the Department's website www.adeq.state.ar.us.

A. Permit Fees

Regulation 9 - Chapter Six: Solid Waste Management Facilities Permit Fees

A.C.A. §8-1-103 " Powers and duties. The Arkansas Department of Environmental Quality and Arkansas Pollution Control and Ecology Commission shall have the following powers and duties.....shall establish, by regulation, reasonable fees for initial issuance, annual review, and modification of water, air, or solid waste permits required."

B. Landfill Disposal Fees

Regulation 11-Chapter Two: Solid Waste Management Landfill and Out-of-State Transporter Disposal Fee System.

A.C.A. §8-6-605. Solid Waste Management and Recycling Fund. "A Solid Waste Management and Recycling Fund is hereby established No more than twenty-five percent (25%) of the moneys received annually into the fund shall be used by the department for the administration of a solid waste management and recycling program and for solid waste management compliance and enforcement activities at landfills and open dumps."

C. Waste Tire Fees

Regulation 14 – Waste Tire Program

A.C.A. §8-9-404. Waste Tire Fees. "(a) There shall be imposed a fee upon the sale of each new motor vehicle tire sold at retail.8-9-404. Waste tire fees." "(b) (2) A total of eight percent (8%) of the proceeds to be deposited into the Arkansas Department of Environmental Quality Fee Fund ..."

D. Licensing Fees

Regulation 27 - Licensing of Operators of Solid Waste Management Facilities and Illegal Dumps Control Officers

A.C.A. §8-6-909. Fees. The Arkansas Pollution Control and Ecology Commission shall have the authority to set fees.....All of the fees shall be deposited in the Arkansas Department of Environmental Quality Fee Fund....

Section 1.104 Demographics

A. Planning Area

Arkansas has an area of 53,182 square miles (34,036,717 acres). The State has seventy-five counties with headquarters at the county seats. For the convenience of county residents, ten rural counties have two county seats. For information about the counties, contact the County Courthouse in the specific county, visit the website www.state.ar.us or call the Association of Arkansas Counties at (501) 372-7550.

There are 493 incorporated Cities and Towns in Arkansas.
See **Appendix 3** for a List of Arkansas Cities and Towns by County.

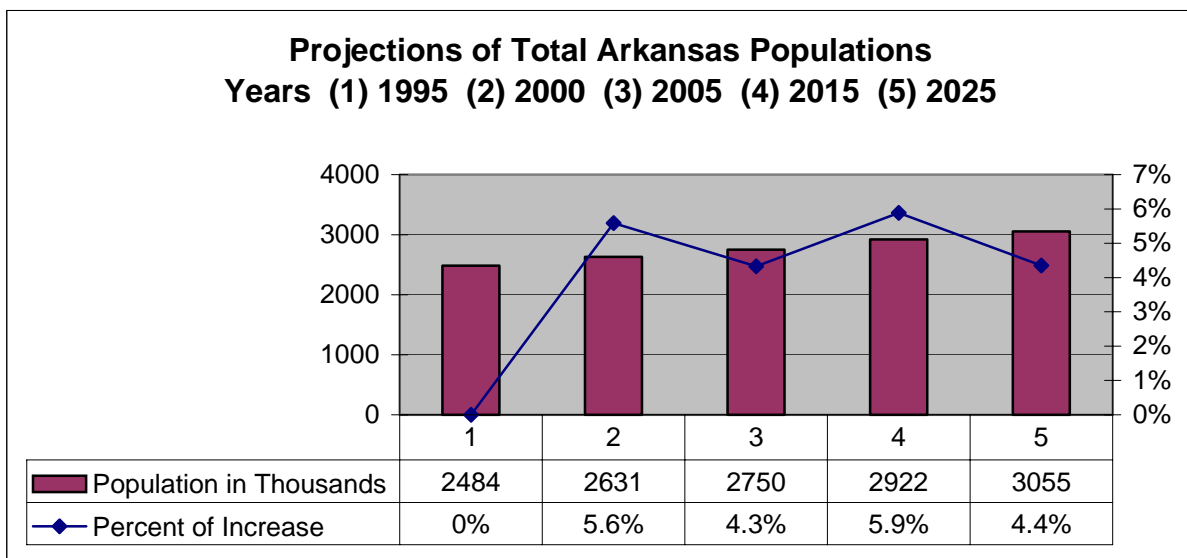
B. Population

Waste generation projections are typically based on the current and projected population of the planning area. The population for the State of Arkansas, according to the 1990 census, was 2,350,725; and according to the 2000 census, increased to 2,673,400; an increase of 12 %.

Current populations may be found at www.census.gov/main/cen2000.html or <http://quickfacts.census.gov/gfd/states/05000.html>.

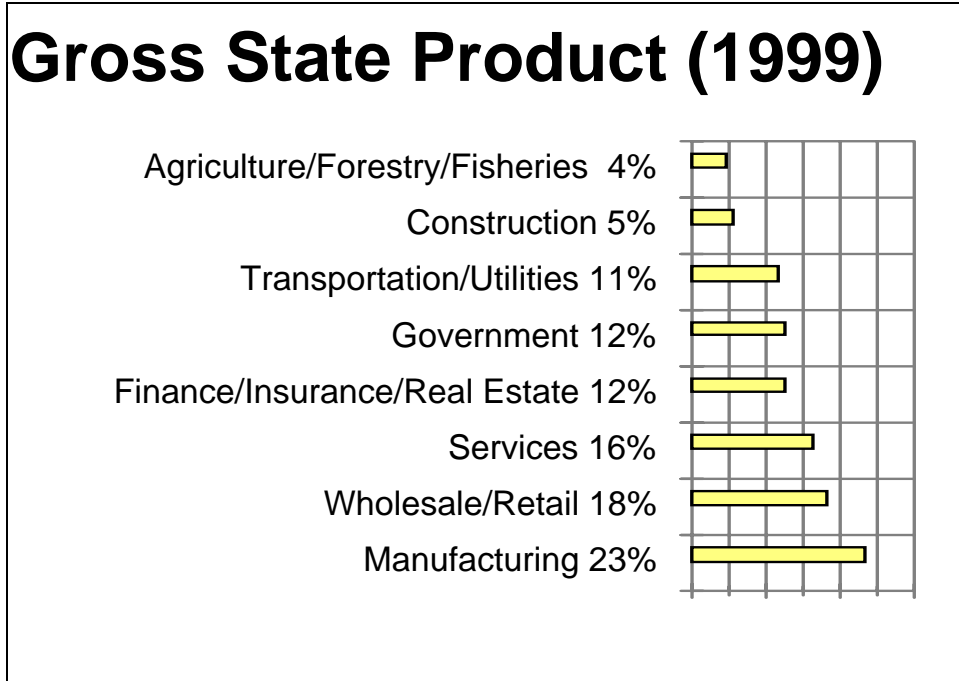
See **Appendix 4** for a list of 2000 populations and square miles per county in Arkansas.
See **Appendix 5** for a formula that may be used to estimate current and future populations.

The following chart is calculated from data retrieved from www.census.gov/populations/state/stpjpop.txt.



C. Industry

A business profile for the State of Arkansas provides information that could be valuable when planning for growth, waste streams, and environmental partnerships.



D. Solid Waste Management Facilities

Active Permitted Solid Waste Management Facilities

All Permitted Facilities are subject to criteria contained in Regulation 22: Solid Waste Management

Class	Total	Classification
Class 1 Municipal Solid Waste Landfill	24	Class 1 landfills are subject to Regulation under <i>Subtitle D of the Resource Conservation and Recovery Act (RCRA), Title 40 of the Code of Federal Regulations, Part 258 (40 CFR 258)</i> . <i>Subtitle D</i> has been adopted by the State and regulates all municipal solid waste landfill (MSWLF) units that accept household wastes for disposal. Class 1 landfills can accept nonhazardous Household Wastes, Commercial Wastes, and Approved Industrial Wastes.
Class 3C Commercial Solid Waste Landfill	1	Class 3C Commercial landfills can accept nonhazardous Commercial Wastes and Approved Industrial Wastes. <i>(All Class 3 and 4 landfills are subject to the criteria contained in 40 CFR 257, which the State has also adopted. There are three categories of Class 3 landfills.)</i>
Class 3N Non-Commercial Industrial Solid Waste Landfill	25	Class 3N Non-commercial can accept nonhazardous approved Industrial Wastes. The landfills are for disposal of waste generated solely by the permittee at that industry location. Only Class 3N landfills are exempt from obtaining a "Certificate of Need".
Class 3T Tire Monofill	2	Class 3T Tire landfills can accept only tires for disposal.
Class 4 C&D Landfill	40	Class 4 landfills can accept nonhazardous, inert, non-putrescible wastes such as: Construction and Demolition Wastes, Appliances and Furniture, and Other Bulky, Inert Wastes.
Class CO Compost Organic Solid Waste Facility	5	Type "CO" facilities may accept any source separated organic wastes such as paper, sewage sludge, food processing wastes or other specific organic wastes, including type "Y" wastes.
Class CS Compost Mixed Solid Waste Facility	1	Type "CS" may receive all types of suitable solid waste for composting including household garbage, commercial wastes, suitable industrial wastes, and all type "O" and "Y" wastes.
Class CY Compost Yard Waste Facility	28	Type "CY" facilities may accept only yard wastes and other wood wastes. Type "Y" facilities qualify for coverage under a general permit in which permit coverage is granted within 30 days of receiving a complete application.
Class TP Tire Processing Facilities	12	These facilities process waste tires for recycling uses or for disposal. An individual permit is required, but there is no preliminary application requirement. See Appendix 6 for a list and a map of Waste Tire Processing Facilities.
Class TS Transfer Station For Solid Waste	93	Transfer stations are facilities that receive solid waste from collection vehicles and the public for transfer to larger vehicles for long distance transport. Like Type "Y" composting facilities, transfer stations are normally covered under a general permit.
Class WR Waste Recovery Facility	6	Also referred to as material recovery facilities, solid waste is sorted and recyclable materials are recovered from the waste stream. Most facilities can be covered under a general permit.
Class WT Waste Tire Collection Centers	116	The centers, normally covered under a general permit, can store outdoors no more than 3,000 loose waste tires, or up to a maximum of 10,000 tires that have been compacted or baled, at any one time. See Appendix 7 for a list and a map of Waste Tire Collection Centers.
Open Facilities	353	<i>(As of August 2003) Technical Branch, Solid Waste Management Division, Arkansas Department of Environmental Quality</i>

See **Appendix 8** for maps pinpointing locations of Permitted Facilities in Arkansas.

See **Appendix 9** for a complete list of Permitted Facilities in Arkansas.

E. Solid Waste Volumes

Solid waste planning requires an estimate of the volume(s) or tonnage of solid wastes currently generated in the plan area. For planning to be effective, the long-term (ten-year) growth in solid wastes also needs to be determined.

Total waste volumes or tonnage going to solid waste disposal facilities within Arkansas, as well as Arkansas generated wastes that are transported out-of-state for ultimate disposal, are summarized in this section.

The amounts are taken from quarterly reports that are received by the Arkansas Department of Environmental Quality from Arkansas solid waste landfills and from waste transporters that haul waste out-of-state, pursuant to A.C.A. §8-6-607 and §8-6-1004.

A.C.A. §8-6-607 and 8-6-1004. Collection of fees. Fees imposed pursuant to the separate provisions of this subchapter shall be collected as follows:



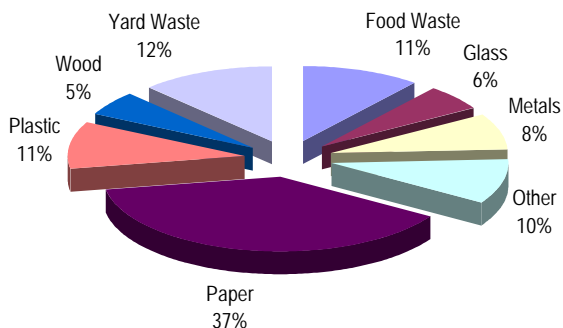
Each landfill permittee and each transporter shall submit to the department on or before January 15, April 15, July 15, and October 15 of each year a quarterly report which accurately states the total weight or volume of solid waste received at the landfill or transported out of state during the quarter just completed;” (§8-6-1004 does not apply to transported waste.)

An analysis on the amount of wastes disposed in existing facilities is included below.

TONS OF WASTE DISPOSAL REPORTED (Per Quarterly Volume Reports)						
	1996	1997	1998	1999	2000	2002
Class 1 & 4 Landfills	2,028,501	2,145,657	2,322,573	2,416,790	2,446,199	2,373,895
Industrial Landfills	144,867	144,536	102,220	118,097	99,560	110,606
Out-of-State Haulers	130,583	151,053	142,436	125,538	127,448	168,352
TOTALS	2,303,951	2,441,246	2,567,229	2,660,425	2,673,207	2,652,853
ANNUAL INCREASE	0.00%	5.62%	4.91%	3.50%	0.48%	-0.77%

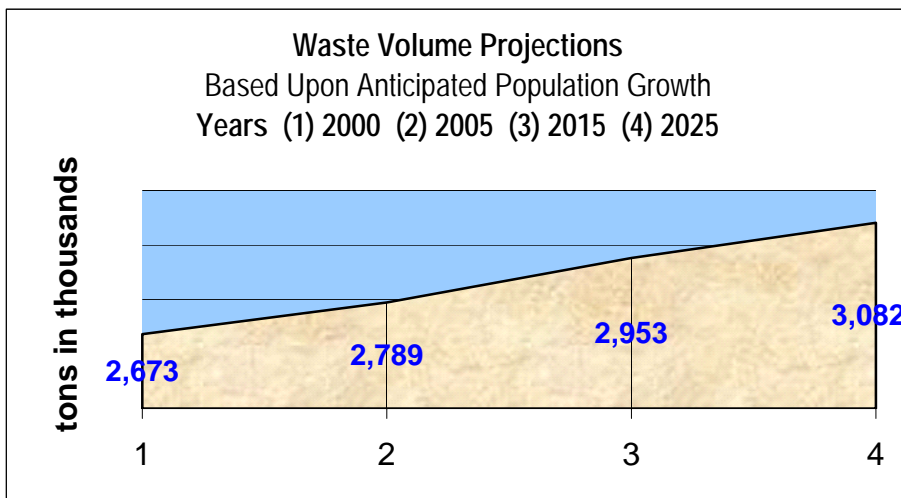
The following chart gives national waste generation percentages as shown on EPA's website.

1999 U.S. Total Waste Generation - 230 Million Tons - Before Recycling



In a plan area without a mandatory trash collection fee, landfill disposal records are a poor indicator of the future volumes of wastes. Also, facility records are often inaccurate if based on visual estimates rather than on weight. Nevertheless, waste disposal records are valuable tools in planning solid waste management.

It is acknowledged that annual waste volume projections are only approximations of what may happen in a planning area, no matter what method is used. Projected annual volumes of solid wastes are based on per capita multipliers.



F. Flow

Facilities often accept wastes from jurisdictions other than the plan area, and collection service contractors often ship wastes out of the plan area.

Solid waste management facility records show whether a waste's origin is inside or outside the plan area.

Although flow within the State does not impact the State as a whole, it may, however, impact an individual District's plan.

G. Economic Impact

The obvious economic impact is the cost related to landfill facilities in their development, management and compliance efforts.

The cost of land usage for solid waste management facilities must be included in the factor.

In addition, there is the cost of waste collection, the workforce, transportation and equipment costs, plus the reduction of property values resulting from uncontrolled litter and illegal dumping. These numbers are difficult to estimate, given the lack of information available at this time.

More definitive job numbers can be estimated from the grants and tax credit programs administered by the Solid Waste Management Division. The estimates in the following charts are gleaned from reports received from recipients of funds from these programs over the past several years.

Recycling Grant Program Jobs

The solid waste management and recycling grants program which offers assistance for Regional Solid Waste Management Districts and local governments and their delegated authorities and agents to develop solid waste management plans, programs, and facilities that integrate recycling as a functional part of the solid waste management system, initiated the following estimated number of jobs from 1992 through 2001:



Municipal Programs	575 jobs
<u>Non-Profit Programs</u>	<u>150 jobs</u>
TOTAL	725 jobs

Tax Credit Program Jobs

The certified tax credit program for the purchase of business equipment that recycles waste initiated the following number of jobs in the State of Arkansas from 1991 through 2001:

Metal Collectors and Processors	126 jobs
Metal End Users	1,039 jobs
Paper End Users	62 jobs
Glass End Users	2 jobs
General Recyclers	103 jobs
Tire Recyclers	24 jobs
Plastic End Users	50 jobs
<u>Compost, Wood, Pallet Recyclers</u>	<u>3 jobs</u>
TOTAL	1,439 jobs

Waste Tire Grant Program Jobs

The waste tire program, which provides assistance for Regional Solid Waste Management Districts for the safe management of waste tires in Arkansas, initiated the following estimated number of jobs from 1992 through 2001:



Waste Tire Processing Facilities	43 jobs
Waste Tire Transporters	40 jobs
Civil Engineering Projects	9 jobs
<u>District Staff/Collection Projects</u>	<u>18 jobs</u>
TOTAL	110 jobs

Section 1.105 Current Services Provided

This section contains a summation of integrated solid waste management services provided by the Arkansas Department of Environmental Quality and includes statutory and regulatory requirements as well as in-house initiatives.

A. COLLECTION SERVICES

A.C.A. § 8-6-207. " Powers and duties of the department and commission generally (b) The Arkansas Pollution Control and Ecology Commission shall have the following powers and duties:

(10) To adopt, after notice and public hearing, and to promulgate, modify, repeal, and enforce rules and regulations for the source reduction, minimization, recycling, collection..... as necessary or appropriate to implement or effectuate the purposes and intent of this subchapter and the powers and duties of the commission under this subchapter."

The Arkansas Department of Environmental Quality currently works with each county to establish and promote recycling by providing technical and educational assistance.

Regulation 28, the Regulation for the Establishment or Designation of Adequate Recyclable Material Collection Centers or Systems in Counties in the State of Arkansas, sets forth guidelines for counties to establish recyclable materials collection centers and the numbers and types of recyclable materials to be collected.

B. DISPOSAL SERVICES

A.C.A. § 8-6-207. " Powers and duties of the department and commission generally (a) The Arkansas Pollution Control and Ecology Commission shall have the following powers and duties:

(1) To administer and enforce all laws, rules, and regulations relating to solid waste disposal;.....

(6) To issue, continue in effect, revoke, modify, or deny, under such conditions as it may prescribe, permits for the establishment, construction, operation, or maintenance of solid waste management systems, disposal sites, and facilities;...."

There are currently 23 Class I Landfill Facilities in the State; 23 Class IV's; and 26 Class III's (Commercial, non-commercial and tires). See Appendix 8 for a complete list of facilities.

Regulation 22, the Regulation for Solid Waste Management, sets forth guidelines for the siting, permitting, financial assurance, and compliance or enforcement for solid waste management facilities throughout Arkansas.

Regulation 11 includes Landfill and Out-of-State Transporter Disposal Fee System; Landfill Post-Closure Trust Fund Fees; and Solid Waste Management and Recycling Grants Program. The chapter on Disposal Fees directs the Arkansas Department of Environmental Quality to collect volume information and disposal fees from landfills throughout the State, as well as from haulers that transport waste that is generated in Arkansas but transported out-of-state for disposal.



C. RECYCLING SERVICES

A.C.A. § 8-9-201. State Marketing Board for Recyclables. "(a)(1) There is established the State Marketing Board for Recyclables to be composed of five (5) members appointed by the Governor and two (2) nonvoting ex officio members....

(g) The Arkansas Department of Environmental Quality, after advice and counsel of the marketing board, shall provide adequate staff to support the activities of the marketing board."

A.C.A. § 8-9-202. Powers and duties of the Department. "The Arkansas Department of Environmental Quality shall have the power and duty to:

(1) Adopt reasonable rules and regulations to effectuate the purposes of this subchapter;

(2) Promote public education and public awareness of the necessity of supporting waste reduction and recyclable material recovery as an integral part of all solid waste and recyclable materials programs in the state; and

(3) Provide to the extent practicable, upon request, to state agencies, planning and technical assistance in carrying out their responsibilities under this subchapter."

RECYCLING AND REGULATION 11

The Solid Waste Management and Recycling Grants Program is a part of Regulation 11. The Arkansas Department of Environmental Quality administers the program. This includes the solicitation of grant applicants through the District, the review of applications, the distribution of funds, the tracking of grant funds and projects by way of progress reports from the Regional Solid Waste Management Districts.

In addition, the Department works with businesses and industries to establish recycling programs by providing technical and educational assistance, as well as hosting workshops and seminars

RECYCLING AND REGULATION 28

Regulation 28, the Regulation for the Establishment or Designation of Adequate Recyclable Material Collection Centers or Systems in Counties in the State of Arkansas, provides the rules and procedures for the establishment or designation of adequate recyclable materials collection centers or systems in counties in the State of Arkansas. The Arkansas Department of Environmental Quality works through Regulation 28 to establish recycling centers in all 75 counties by providing technical and education assistance.

STATE OF RECYCLING IN ARKANSAS – 2000

Arkansas remained ahead of the 2000 recycling goal of 40 percent by increasing the amount of materials diverted from Arkansas landfills to 44.3 percent.

Increased interest from citizens, elected officials, businesses and industries continues to fuel the drive to find ways for Arkansas to be less dependent upon solid waste landfills.



Contributing to the State's successes are the maturing community recycling programs, additional business and industrial participation, public awareness campaigns and diversion savings by choosing alternative waste disposal over traditional land filling.

COOPERATIVE EFFORT

Cooperation among many different entities has been the cornerstone of Arkansas' recycling success, and the Arkansas Department of Environmental Quality continues to explore new partnership opportunities.

Federal, state and local government agencies; elected officials; Regional Solid Waste Management Districts; public and private schools and universities; businesses and industries; non-profit organizations; professional associations; recycling advocacy groups; and concerned citizens all pitch in to make recycling work in Arkansas.

This spirit of cooperation has amplified individual efforts, allowing Arkansas to reach past recycling goals without government mandates, and is critical to meeting our new recycling goals.

DEPARTMENT ACTIVITIES

The Arkansas Department of Environmental Quality's Solid Waste Management Division's Recycling Section offers a variety of programs designed to foster responsible solid waste management in all sectors of the state.

Technical assistance is provided for developing, improving and promoting solid waste management programs focused on source reduction, reuse and recycling.

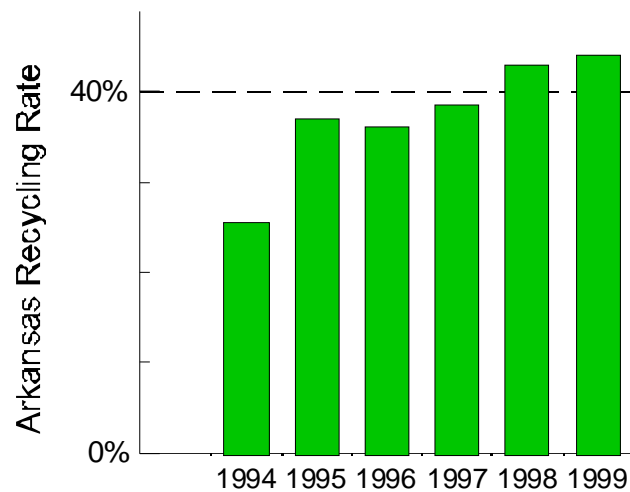
Educational programs, running the gamut from classroom presentations to publications, help everyone from preschoolers to senior citizens understand the need to manage our solid waste and the management options available.

The Solid Waste Management and Recycling Grants provide funding to help communities develop local recycling programs.

All these activities combine to provide a recycling infrastructure capable of responsibly handling Arkansas' solid waste and a citizenry dedicated to doing so.

RECYCLING GRANTS TO COMMUNITIES

During the past seven years, over 650 recycling grants have been awarded to communities.



With investments of almost \$2.6 million annually for a total of more than \$17.3 million, citizens, businesses, schools and industries in all 75 counties have the opportunity to reduce waste by making the choice to recycle at more than 200 public recycling centers.

During these seven years, recycling diverted nearly 5.2 million tons of waste from Arkansas landfills - nearly 4,100 pounds for every Arkansan. In 2000, Arkansas recycled 860,605 tons, saving nearly \$26 million in landfill disposal costs and averaging 688 pounds per person recycled.

In 2000, the direct economic benefits from the recycling grants program continued to increase.

Of the \$16.8 million granted, more than \$14 million has been expended with a direct economic benefit of nearly \$20 million to the citizens of Arkansas.

For each dollar expended by the program, citizens realized a direct return of \$1.66 and nearly 80 pounds of waste recycled.

D. WASTE REDUCTION SERVICES

A.C.A. §8-6-207. "Powers and duties of the department and commission generally (b) The Arkansas Pollution Control and Ecology Commission shall have the following powers and duties:

(10) To adopt, after notice and public hearing, and to promulgate, modify, repeal, and enforce rules and regulations for the source reduction, minimization, recycling, collection.....as necessary or appropriate to implement or effectuate the purposes and intent of this subchapter and the powers and duties of the commission under this subchapter."

The Solid Waste Management Division offers the following services and programs to help the State meet waste reduction goals:

PERMITS

Permits material recycling facilities; waste tire processing facilities; composting facilities.

LICENSING

Provides education through our solid waste management facility operator and illegal dumps control officer licensing programs.

OUTREACH

Provides education through a recycling outreach program.

WORKSHOPS

Conducts teacher workshops on integrated solid waste management and provides lesson workbooks, developed by the Arkansas Department of Environmental Quality and others, for students.

FEES

Collects fees for a recycling grants funding program and distributes grant funds for waste recycling programs and for waste tire management.

TAX CREDITS

Administers a recycling equipment tax credit program.

Recycling Equipment Tax Credit Program

Pursuant to A.C.A. §26-51-506 and A.C.A. §8-9-202, and under the auspices of Regulation 16, the Rules and Administrative Procedures for the Certification of Taxpayer Eligibility for Arkansas Income Tax Credit for the Purchase of Equipment Used to Reduce, Reuse or Recycle Solid Waste Material, the program, which is administered by the Solid Waste Management Division, began in 1992.

This regulation provides for a tax credit, as well as the recapture of the credit in certain instances, as an incentive for taxpayers to engage in waste reduction, reuse, and/or recycling activities including the use of post-consumer recyclables generated in Arkansas.

From the onset of the program through 2001, 101 companies completed 399 projects that received certification to receive tax credits.

Information and forms are available directly from the Arkansas Department of Environmental Quality web site www.adeg.state.ar.us or by contacting the tax credit administrator at 501-682-0842.

LOAN PROGRAM

Administers a small business loan program for waste reduction.

Small Business Loans for Waste Reduction

In addition to the services mentioned above, the Arkansas Department of Environmental Quality's Small Business Assistance Program administers a loan program to assist businesses in implementing waste reduction programs.

These low interest loans are available to any established business having less than 100 employees. Loans can be made in amounts up to \$20,000 for a term of up to 10 years.

Proceeds may be used for the purchase of recycling equipment, implementation of new technologies, waste treatment systems or other purposes that result in waste elimination or reduction.

Information and loan applications are available directly from the Arkansas Department of Environmental Quality web site www.adeg.state.ar.us or by contacting the business assistance loan administrator at 501-682-0709.

E. SPECIAL MATERIALS SERVICES

Listed below are services that the Solid Waste Management Division provides in the area of Special Materials.

1. Illegal Disposal Services

BEFORE



AFTER



a. Illegal Dumping Services

The Arkansas Department of Environmental Quality enforces Arkansas State Statute that has established criminal, civil, and administrative penalties for anyone who violates under "The Arkansas Solid Waste Management Act," A.C.A. §8-6-201 et seq. This includes provisions for illegal dumping.

The Solid Waste Management Division offers the following services to help the State with illegal dumping issues:

- Provides statewide inspection of illegal dump sites that are reported to the Arkansas Department of Environmental Quality, Solid Waste Division's Enforcement Branch.
- Supplies technical assistance in the remediation of known sites.
- Provides education through our Solid Waste Licensing Program which licenses illegal dumps control officers.
- Offers education through our recycling outreach projects.
- Gives support to cities, counties and Regional Solid Waste Management Districts to develop specifications and oversight of illegal dump clean up projects.

b. Litter Services

The Solid Waste Management Division offers the following services to help the State with litter issues:

- Enforcement of "The Litter Control Act", A.C.A. 8-6-401 et seq.
- Permitting of solid waste management facilities.

- Investigating complaints.
- Partnering with other agencies, such as Keep Arkansas Beautiful, Arkansas Parks and Tourism, and Arkansas Highway and Transportation Department to educate public on litter issues.

c. Open Burning Services

The Arkansas Department of Environmental Quality's Air Division addresses open burning issues under Regulation 18, the Arkansas Air Pollution Code.

d. Waste Tires Services

Prior to 1991, most waste tires were buried in landfills, burned, or stockpiled in hundreds of waste tire dumps across the State.

Act 749 in 1991, codified as A.C.A. §8-9-401 *et seq.*, banned the landfilling of whole tires, established the Waste Tire Grant Fund, and required the development of regulations for waste tire management.

The regulation for waste tire management in Arkansas is Regulation 14, Regulations and Administrative Procedures for the Waste Tire Program.



A.C.A. §8-9-401. Legislative intent. "The purpose of this subchapter is to protect the public health and the state's environm storage, recyclin

The Solid Waste Management Division offers the following services to help with waste tire issues in the State:

- Provides administrative and programmatic oversight of a statewide waste tire management program that ultimately addresses, through regional waste tire management programs operated by Regional Solid Waste Management Districts, approximately 2.6 million waste tires generated annually in Arkansas.

See **Appendix 6** for a map of Regional Waste Tire Management Districts and a map of Waste Tire Program Site Locations, current as of this publication.

- Administers the waste tire grant program and distributes funds quarterly to the Regional Solid Waste Management Districts which, in turn, allows the Districts to operate comprehensive regional waste tire management programs that span from transportation and/or collection to processing or disposal.
- Additionally, as needed, distributes funds for the remediation of waste tire sites, for the management of large truck tires, for the support of special projects or for the support of shortfalls in District waste tire funding.

Totals grants dollars disbursed during the year 2002 included:

- \$3,338,627 - Waste Tire Management Funds
 - \$101,896 - Abatement Funds
 - \$210,775 - Additional Truck Tire Funds
 - \$273,424 - Support Funds
-
- Issues permits and provides compliance oversight of waste tire processing facilities and waste tire collection centers.
 - Licenses waste tire transporters.
 - Provides assistance to waste tire retailers.
 - Researches new markets.
 - Offers guidance in developing waste tire plans.
 - Sponsors workshops and meeting on waste tire issues.

See **Appendix 10** for a list of licensed waste tire transporters, current as of this publication. For an up-to-date list, contact the Solid Waste Division.

2003 ARKANSAS WASTE TIRE FACTS	NUMBERS
Waste Tire Processing Facilities	10
Waste Tire Collection Centers	116
Waste Tire Transporters	156
Waste Tire Monofills	2
Fuel End Users	1
Civil Engineering Projects	2

e. Batteries Services

The Solid Waste Management Division offers the following services to help the State with waste battery issues:

- Presented Legislation, under A.C.A. §8-9-303, that provides for an advance disposal fee to be collected when residents purchase new lead-acid batteries.
- May inspect facilities that sell lead-acid batteries.
- Produces and distributes notices describing or presenting recycling options to retailers that offer lead-acid batteries for sale.
- Provides public education through the Recycling Branch regarding lead-acid batteries.

f. Waste Oil Services

The Solid Waste Management Division offers the following services to help the State with waste oil issues:

- The Recycling Branch provides educational programs and referral information on waste oil recycling services.
- Other waste oil issues, such as oil spills and pits, are under the supervision of other divisions within the Arkansas Department of Environmental Quality.
- In addition, the Solid Waste Management Division offers the following services through its Income Tax Credit Program in the following manner to help the State with waste oil burner issues.
- Two of the primary eligibility requirements for the Income Tax Credit for Recycling Equipment is 1) the equipment must be used for 'commercial' purposes, and 2) the solid waste used by the equipment must be at least 50% recovered materials, of which at least 10% is post-consumer. The oil collected for waste oil heaters definitely meets the latter requirement, but the former must be met by collecting waste oil from individuals or businesses other than that generated at the individual facility.

- Once the equipment is approved and certified by our agency, the facility will then receive an income tax credit certification (from DF&A) at the amount of 30% of the equipment's cost.
- There are several companies in Arkansas that collect oil from waste oil generators. This is usually done for a fee. Agricultural and service communities have purchased these oil burners to use their collected oil in an environmentally and economically sound way.

g. Medical Waste Services

The Arkansas Department of Health addresses medical or infectious waste issues.

h. Hazardous Waste Services

The Arkansas Department of Environmental Quality's Hazardous Waste Division addresses these issues under Regulation 23, Regulation 29 and other programs.

i. Construction and Demolition Waste Services

The Solid Waste Management Division offers the following services to help the State with construction and demolition waste issues:

- Permitting solid waste management facilities.
- Investigates complaints regarding the illegal dumping of construction and demolition waste.
- Educational services are presented by the Recycling Branch.

j. Household Chemicals Services

The Solid Waste Management Division offers the following services to help the State with household chemical waste issues:

- Educational services and programs are presented by the Recycling Branch.
- Permitted Class 1 Landfill Facilities accept household chemicals for disposal.

k. Waste Electronics Services

The Solid Waste Management Division offers the following services to help the State with waste electronic equipment issues:

- Educational services are presented by the Recycling Branch.
- Act 1410 of 2001, codified as A.C.A. §25-34-101, et seq., "The Arkansas Computer and Electronic Solid Waste Management Act".

- “The Computer and Electronic Solid Waste Management Act” for state owned equipment mandates that computers and electronic equipment owned by the state shall be properly disposed of either by de-manufacturing or recycling.
- The Act, administered by the Arkansas Department of Environmental Quality, established the Computer and Electronic Recycling Fund that allow grants to be awarded for the development of programs, public and private, to properly dispose of electronic equipment.

F. EDUCATION AND PUBLIC AWARENESS SERVICES

The Solid Waste Management Division offers the following educational services throughout the State regarding special waste issues:

- Provides statewide technical assistance and customer services on all programs and services offered by the Arkansas Department of Environmental Quality.
- Provides statewide technical assistance for the remediation of illegal dumping sites and for special waste handling and disposal and/or recycling methodologies.
- Provides education through our recycling outreach projects.
- Provides information and support to citizens, cities, counties and Regional Solid Waste Management Districts as requested and as needed.
- Provides education through our Solid Waste Licensing Program.

A.C.A. §8-6-901, et seq..... A.C.A §8-6-903. Licenses required. (a) It shall be illegal for any county, municipality, governmental subdivision, public or private corporation, or other person to operate a solid waste management facility unless the competency of the operator is duly licensed by the Director of the Arkansas Department of Environmental Quality under the provisions of this subchapter.....”:

The Solid Waste Licensing Program for the licensure of solid waste management facility operators and illegal dumps control officers is administered by the Solid Waste Management Division of the Arkansas Department of Environmental Quality, under the authority of A.C.A. §8-6-901, et seq. and Regulation 27, the Regulation for the Licensing of Operators of Solid Waste Management Facilities and Illegal Dumps Control Officers.

- The Solid Waste Licensing Program began in 1985 as a voluntary program for the licensing of sanitary landfill operators.
- In 1991, the Program became mandatory. In 1995, the program was broadened to include operators of other types of solid waste management facilities.
- In 1997, the program was broadened again to include licensing for illegal dumps control officers.
- In 2001, the program began licensing Illegal Dumps Control Officers

The Arkansas Department of Environmental Quality implements the license issuance and renewal processes, as well as coordinates the oath taking and swearing in of illegal

dumps control officers by the Hearing Officer of the Arkansas Pollution Control and Ecology Commission.

The department implements this program with the assistance of a ten member advisory committee. The following members are current as of this publication. An updated list may be found at www.adeq.state.ar.us.

SOLID WASTE LICENSING COMMITTEE

Name	Affiliation	Phone/Fax/E-mail	Mailing Address
The Hon. Jack E. Jones, Sr., Chair Term Expires: 7/27/08	Jefferson County	(870) 541-5360 (Phone) (870) 536-2977 (Fax) judgesoffice@jeffersoncountyyark.com	101 East Barraque Pine Bluff, AR 71601
Jim Willits, Vice Chair Term Expires: 7/27/08	American Composting, Inc.	(501) 945-8888 (Phone) (501) 945-6945 (Fax) amcompost@aol.com	11911 Faulkner Lake Road North Little Rock, AR 72117
Elizabeth Hoover, Exec. Secretary Term Expires: 7/27/05	ADEQ Solid Waste Division	(501) 682-0583 (Phone) (501) 682-0611 (Fax) ehoover@adeq.state.ar.us	P.O. Box 8913 Little Rock, AR 72219-8913
Jim Bailey Term Expires: 7/27/05	Arkansas Environmental Academy	(870) 574-4552 (Phone) (870) 574-4565 (Fax) jbailey@sautech.edu	SAU Tech Station Camden, AR 71701
Phyllis Bone Term Expires: 7/27/08	City of Fort Smith	(479) 784-2329 (Phone) (479) 646-2255 (Fax) pmooney@fsark.com	5900 Commerce Road Fort Smith, AR 72916
Roger Davis Term Expires: 7/27/08	Davis Rubber Company	(501) 374-3075 (Phone) (501) 374-7523 (Fax) hershel01@alltel.net	1600 East 15 th Street Little Rock, AR 72202
Micci Fendley Term Expires: 6/22/06	Garland County Landfill	(501) 623-8243 (Phone) (501) 321-1468 (Fax) micci@ipa.net	P.O. Box 638 Hot Springs, AR 71902-0638
Sid Fitzgerald Term Expires: 7/27/08	Consultant	(501) 455-2142 (Phone/Fax) <i>(Please call prior to sending fax.)</i> sidfitz@msn.com	9616 Alexander Road Mabelvale, AR 72103
The Hon. Steve McGuire Term Expires: 7/27/08	Mississippi County RSWMD	(870) 763-3212 (Phone) (870) 763-0150 (Fax) mcajudge@missconet.com	200 West Walnut Blytheville, AR 72315
Mark Witherspoon Term Expires: 7/27/08	Genesis Environmental Consulting	(501) 455-2199 (Phone) (501) 455-4547 (Fax) mwitherspoon@genesisenvironmental.net	11400 West Baseline Little Rock, AR 72209

The Arkansas Department of Environmental Quality reviews and approves training course curriculum and training schedules on a case-by-case basis. Sources of training include:

- Arkansas Environmental Academy (AEA)
- Solid Waste Association of North America (SWANA)
- Arkansas Environmental Federation (AEF)
- Southern Environmental Enforcement Network (SEEN)
- US Environmental Protection Agency (EPA)
- University of Arkansas at Little Rock (UALR)
- Arkansas Department of Environmental Quality (ADEQ)
- Other sources approved by the Department

Individuals participating in the Solid Waste Licensing Program include:

- Licensed solid waste management facility operators
- Provisionally certified solid waste management facility operators
- Operators-in-training (enrolled in 180-day waiting period)
- Illegal Dumps Control Officers

G. OTHER SERVICES PROVIDED

There are many roles that the Arkansas Department of Environmental Quality and the Solid Waste Management Division play in the development and implementation of an effective solid waste management program. It is important for the Department to identify the leadership roles necessary to effectuate continuity and consistency.

Public Notice and Participation Services

Actively encourages public comments and input.

Information Provider Services

Researches, develops, and communicates information.

Information Hub Services

Keeps current on programs, trends, activities, successes, and research in order to facilitate collaboration and communication among various solid waste stakeholders.

Technology Transfer Services

Develops and learns about successful solid waste techniques and programs. Funds pilot projects and new technologies, and insure their results are evaluated. Partners with other successful programs, agencies, and industries.

Measurement, Monitoring, and Evaluation Services

Monitors and evaluates progress in programs statewide. Communicates the results and makes recommendations for changes and adjustments.

Statewide Coordination and Policy Leadership Services

Facilitates and acts as a catalyst for policy development and amendment.

Direct Service Delivery Services

Offers technical assistance to municipalities, counties, Regional Solid Waste Management Districts, and industry in order to achieve effective results and build partnerships.

Information Sharing Services

Facilitates partnerships and alliances with other agencies and industry which include, at the least, the entities in the following list:

Environmental		Partnerships		
COMPANY	ADDRESS	CITY	ZIP	PHONE
AR Environmental Federation	1400 W. Markham #250	Little Rock	72201	(501) 374-0263
AR Association of Counties	1415 W. Third	Little Rock	72201	(501) 372-7550
AR Association of Regional Solid Waste Management Districts	c/o POB 2067	Fort Smith	72902	(501) 785-2651
AR Attorney General's Office	323 Center, Suite 200	Little Rock	72201	(501) 682-2007
AR Conservation Coalition	804 Konrad Court	Little Rock	72223	
AR Department Of Health	4815 West Markham #55	Little Rock	72205	(501) 661-2882
AR Dept of Parks and Tourism	1 Capitol Mall, Suite 4a-900	Little Rock	72201	(501) 682-7777
AR Dept of Hwy.& Transportation Dept	P O Box 2261	Little Rock	72203	(501) 569-2000
AR Farm Bureau	12814 Cantrell Rd	Little Rock	72223	(501) 771-1010
AR Environmental Academy	SAU Tech Station	Camden	71760	(870)574-4550
AR Forestry Commission	3821 W Roosevelt Rd	Little Rock	72204	(501) 296-1940
AR Game & Fish Commission	#2 Natural Resources Dr	Little Rock	72205	(501) 223-6300
AR Governor's Office	State Capitol Building, Suite 250	Little Rock	72201	(501) 682-2345
AR Livestock & Poultry Commission	#1 Natural Resources Drive	Little Rock	72205	(501) 907-2400
AR Municipal League	P O Box 38	Little Rock	72115	(501) 374-3484
AR Poultry Federation	321 S Victory Street	Little Rock	72203	(501) 375-8131
AR Recycling Association	425 West Capital Ave. #1400	Little Rock	72201	(501) 688-8839
AR Recycling Coalition	P O Box 1594	Fairfield Bay	72088	(866) 290-1429
AR Soil & Water Conservation Commission	101 E Capitol Ave # 350	Little Rock	72201	(501) 682-3986
AR State Chamber of Commerce	P.O. Box 3645	Little Rock	72203	(501) 374-9225
AR Wildlife Federation	9700 N Rodney Parham Rd, # 1-2	Little Rock	72227	(501) 224-9200
Cooperative Extension Service	P O Box 391	Little Rock	72203	(501) 671-2080
Keep Arkansas Beautiful Commission	One Capitol Mall, Suite 4A-107	Little Rock	72201	(501) 682-3507
The Nature Conservancy	601 N. University Ave.	Little Rock	72205	(501) 663-6699
Ozark Society	5210 Sherwood Road	Little Rock	72207	(501) 663-3023
Peoples Action for a Safe Environment	322 Watson	Fayetteville	72701	
Rubber Manufacturers Association	1400 K Street, N.W.	Washington, D.C	20005	(202) 682-4880
Sierra Club	302 Leflar Law Center, U of A	Fayetteville	72701	(501) 571-3005
Southern Environmental Enforcement Network (SEEN)	504 Brookwood Blvd., Ste. 130	Birmingham, AL	35209	205-414-9748
SWANA	1100 Wayne Avenue, Ste. 700	Silver Spring, MD	20910	(301)585-2898
Tire Industry Association	P.O. Box 37203	Louisville, KY	40233	800-426-8835
Weyerhaeuser Company	POB 7	Mountain Pine	71901	(501) 767-7329

PART ONE

STATEWIDE SOLID WASTE MANAGEMENT PLAN
For the State of Arkansas

CHAPTER TWO — ACTION PLAN

Section 1.201 Mission Statement

“It is the mission of the Solid Waste Management Plan for the State of Arkansas to protect public health and environmental quality. The Plan will establish minimum requirements for regional solid waste management plans.”

“Never doubt that a small group of thoughtful, committed citizens can change the world. Indeed, it is the only thing that ever has.”

Margaret Mead

Section 1.202 Executive Summary

A. Strategies

This Statewide Solid Waste Management Plan was developed from a systematic planning process that emphasized regional and public participation.

This process was used to determine where solid waste management efforts should be directed for the next decade by seeking guidance from a wide range of citizens including solid waste professionals and representatives of organizations involved with solid waste management issues.

Six specific goal areas emerged. The six goal areas identified during the planning process are:

Collection
Disposal
Recycling
Waste Reduction
Special Materials
Education and Public Awareness

An important part of the public participation process focused on actions necessary to achieve the desired goals. Under **Chapter Two, Section 1.203 – Goals**, specific goal areas are expanded.

The Current Services Provided Section under Chapter One, Section 1.105, identifies current activities and services that are provided as they relate to these six Goal Areas.

The consensus from the public participants was that goals should be supported by action. Under Chapter Two – Action Plan, key solutions to problems and issues relating to these goals are presented, along with legislative study recommendations.

B. Future Outlook

The important solid waste management concerns and issues presented to the 83rd General Assembly of 2001 made it clear that a Statewide Solid Waste Management Plan is a necessary instrument.

No doubt, a Statewide Solid Waste Management Plan will provide a timely and viable guideline for the State and for local governments.

The plan will help ensure that actions and activities comply with, as well as include, the latest solid waste management ideas, advancements, and innovations.

This useful tool will help educate the public on governmental issues, responsibilities and duties surrounding the proper management of solid waste for and by the citizens of Arkansas.

“Few will have the greatness to bend history itself; but each of us can work to change a small portion of events, and in the total of all those acts will be written the history of this generation.”

Robert F. Kennedy

C. Effective Dates

This Statewide Solid Waste Management Plan follows the ten-year Strategic Plan that has been implemented by the Arkansas Department of Environmental Quality. Copies of both plans are located on the Department’s website www.adeg.state.ar.us.

Barring unforeseen developments, the Statewide Solid Waste Management Plan, approved as a result of this planning process, shall remain in force for a period of not more than ten years from the initial plan’s approval date.

Following a period for public comment and input, the document will be reviewed and approved by the Arkansas Department of Environmental Quality. The effective date shall be the approval date and will be as shown on the cover of the final version of this document.

At the end of the ten-year period from approval date, if not before, a complete review of the plan will be achieved at which time the plan will be rewritten in its entirety, if deemed necessary by the Arkansas Department of Environmental Quality.

Section 1.203 Goals

A. Departmental Land Objectives

Effective July 1, 1999, in accordance with A.C.A. §8-6-1002(a)(5)(A), the Arkansas Department of Environmental Quality began the development of a ten-year strategic plan and a set of performance measures.

The Department developed goals, objectives, strategies and performance measures for six high-level goal groups: Air, Water, Land, Environmental Management, Public Involvement and Science and Technology.

A copy of the Arkansas Department of Environmental Quality's ten-year strategic plan can be found on the Department's website, <http://www.adeq.state.ar.us/>.

The Solid Waste Management Division then developed four land objectives that resulted directly from an intense study and from active participation in the Arkansas Department of Environmental Quality's overall performance management program.

A.C.A. §8-6-1002(a)(5)(A) ".....fund to be utilized by the department for instituting a management organization utilizing the principles of the National Environmental Performance Partnership System advocated by the United States Environmental Protection Agency which integrates environmental indicators, management information, and performance-based budgeting and accounting to measure agency performance."

The Strategic Plan provides a high-level view of the Arkansas Department of Environmental Quality's vision for the future and its associated goals, objectives and strategies.

The following is a listing of the high-level land objectives adopted in 2001 for the Arkansas Department of Environmental Quality for the current decade.

Arkansas Department of Environmental Quality's 2001-2011 Strategic Plan High-Level Land Objectives

<i>Land Objective 1</i>	Regulated land-based activities are safely managed.
<i>Land Objective 2</i>	Return 6,635 acres of environmentally impacted land to productive use by 2010.
<i>Land Objective 3</i>	Increase recycled hazardous waste, reclaimed, used, or reused by 20% by 2010.
<i>Land Objective 4</i>	Reduce the amount of solid waste sent to landfills by 40% by 2005 and 45% by 2010, based on a year-to-year comparison.

B. Solid Waste Management Division’s High-Level Goals

“Start by doing what is necessary, then what is possible, and suddenly you are doing the impossible.”
 St. Francis of Assisi

With the Arkansas Department of Environmental Quality’s Land Objectives in mind, the Solid Waste Management Division developed high-level goals to meet its respective objectives and to address today’s environmental challenges.

Solid Waste Management Division’s 2001-2011 Strategic Plan High-Level Goals	
<i>High Level Goal A</i>	By 2010, all solid waste facilities within 80% compliance with operation performance standards established by 2002.
<i>High Level Goal B</i>	Return 1,875 acres of known environmentally damaged land to productive use.
<i>High Level Goal C</i>	Increase solid waste management options to divert 40% of waste from landfills.

C. Statewide Solid Waste Management Plan Goal Areas

With the aforementioned Land Objectives and the High-Level Goals in mind, the Arkansas Department of Environmental Quality’s vision for the Statewide Solid Waste Management Plan is to identify and explore specific planning strategies for each Goal Area.

The **Statewide Solid Waste Management Plan Part One – Chapter One, Section 1.105 Current Services** names current services and activities of the Solid Waste Management Division and other solid waste management stakeholders as these activities relate to the Goal Areas.

Provided under **Section 1.203 Goal Areas – Objectives in Chapter Two of Part One** are suggested solutions to known problems and issues. The solutions are presented by responding to questions such as the sample questions listed in the following chart.

Statewide Solid Waste Management Plan	
GOAL AREAS	
1. <i>Collection</i>	<i>What are realistic goals for collection in the State?</i>
2. <i>Disposal</i>	<i>What are the State's goals for proper waste disposal and facility compliance?</i>
3. <i>Recycling</i>	<i>How will the State help assure that Recycling follows the legislated goals? Are they realistic and achievable?</i>
4. <i>Waste Reduction</i>	<i>What will be the State's direct efforts with business, industry and households to reduce the amount of waste entering the waste stream?</i>
5. <i>Special Materials</i>	<i>What role will the State take in proper management and/or disposal of illegal dumps; construction debris; HHW; bulky waste; tires; etc.?</i>
6. <i>Education and Public Awareness</i>	<i>How will the State approach public education and public awareness?</i>
7. <i>Other Goals</i>	<i>What other goals does the State wish to accomplish?</i>

"The difference between the impossible and the possible lies in a person's determination."

Tommy Lasorda

Section 1.204 Goal Area Related Objectives

The following chart lists the six main goal areas identified in the planning process and expands the Arkansas Department of Environmental Quality's overall objectives.

Statewide Solid Waste Management Plan GOAL OBJECTIVES	
A. <i>Collection</i>	<i>To develop and implement an integrated solid waste management system that is readily accessible and utilized by every citizen in the State.</i>
B. <i>Disposal</i>	<i>To ensure proper waste disposal and facility compliance.</i>
C. <i>Recycling</i>	<i>To ensure that all cities, businesses, and industries have the opportunity to participate in an integrated solid waste management system that includes recycling.</i>
D. <i>Waste Reduction</i>	<i>To educate and direct efforts with business, industry and households to reduce the amount of waste entering the waste stream.</i>
E. <i>Special Materials</i>	<i>To ensure the proper management and/or disposal of construction debris; HHW; bulky waste; tires; and others.</i>
F. <i>Education and Public Awareness</i>	<i>To develop and implement public education and awareness programs and services on integrated solid waste management.</i>
G. <i>Other</i>	<i>To remain cognizant of other ideas and observances.</i>

In this Section, the Arkansas Department of Environmental Quality seeks to identify known problems and to examine possible solutions as they relate to each of the Goal Areas.

A. COLLECTION - GOAL OBJECTIVES
Problems

An integrated solid waste management system is not readily accessible or utilized by every citizen in the State.

Solutions

1. Survey why people are not using collection services.
2. Establish bulky item collection centers in every county.

3. Explore state funding or tax for mandatory collection programs.
4. Study “pay-as-you-throw” systems.
5. Ban disposal on private property.

B. DISPOSAL - GOAL OBJECTIVES

Problems

Siting of integrated solid waste management facilities is not equally distributed throughout all areas of the State.

Solutions

1. Establish special materials disposal facilities which meet the needs of the public and other stakeholders.
2. Encourage the permitting of more transfer stations.
3. Apply regulations equitably.

C. RECYCLING - GOAL OBJECTIVES

Problems

Not all cities, businesses, and industries have the opportunity to participate in an integrated solid waste management system that includes recycling.

Solutions

1. Target every Class 1 city with a customized recycling analysis including waste audit, local policies review, local facilities/infrastructure review, recycling evaluation, and recommendations for improvement.
2. Identify priority recyclable waste materials and, beginning in 2003, design and implement one material-specific market development plan each year.
3. Develop and implement an outreach campaign to promote the recycling tax credits program among Arkansas industries.

D. WASTE REDUCTION - GOAL OBJECTIVES

Problems

There is insufficient education, information and awareness of waste reduction programs and issues by the industry, local officials and citizens of the State.

Solutions

Develop and implement an outreach campaign to promote waste reduction among industry, local officials and citizens of the State.

E. SPECIAL MATERIALS - GOAL OBJECTIVES

Problems

1. There are not enough markets, options, or facilities for special materials.
2. Illegal dumping continues to proliferate in the rural areas of the State.
3. Construction and demolition waste needs to be managed more effectively.

Solutions

1. Develop an illegal dump eradication alliance partnership with Regional Solid Waste Management Districts, landfills, industry, other agencies and associations.
2. Encourage local funding for or by Regional Solid Waste Management Districts for inventories, fly-over mapping, content composition, location and prioritization of illegal dumps within their areas, and, as a result, receive up-to-date inventories from all areas of the state, with inventory updates, at the least, every five years.
3. Revise the existing Regulation 14: Waste Tire Program to reflect changes mandated by the Arkansas General Assembly.
4. Encourage a funding preference for recycling.
5. Decrease the incidents of illegal waste tire dump sites by 20%.
6. Reduce the percentage of total waste tires and waste tire equivalents being land disposed in the amount of 30% using 2000 calendar year tire numbers as a beginning measure.
7. Establish waste tire processing facilities in Arkansas to manufacture and market waste tire chip aggregate and shreds for use in civil engineering projects.
8. Abate waste tire sites that meet abatement criteria as established by the Arkansas Department of Environmental Quality with funding provided from abatement grant fund dollars and/or reserves held by districts.
9. Implement Act 1410 of 2001 concerning computer and electronic solid waste management.

F. EDUCATION AND PUBLIC AWARENESS - GOAL OBJECTIVES

Problems

1. There are several localities in the State and certain industries and small businesses where citizens have not received the benefit of education and public awareness projects concerning solid waste related issues.
2. Education or public awareness does not necessarily ensure implementation of programs.

Solutions

1. Publish a GIS mapping and database inventory of content composition and prioritization of all known or perceived illegal dumps within the state. This will be done by using inventories received from Regional Solid Waste Management Districts, by including illegal dump complaints received by the Arkansas Department of Environmental Quality, and by information from other sources.
2. License 90% of all solid waste management facility operators in accordance with Regulation 27 and begin voluntary licensing of illegal dumps control officers.
3. Provide Legislators with sufficient data and viable program background materials to ensure that additional funding is made available to address illegal dumps and illegal dump issues for no less than 10 years.
4. Develop and provide education packages on illegal dumping laws and compliance procedures to 100% of the prosecuting attorneys and law enforcement officers in the State. (A suggestion is to invite our Illegal Dumps Control Officers to implement a project to bring the Southern Environmental Enforcement Network class for prosecuting attorneys to Arkansas.)
5. Develop and provide educational packages on illegal dumping laws to 80% of general contractors and other occupations that may contribute to illegal dumping.
6. Implement a comprehensive Local Entities Outreach Program to educate local governments and other organizations about opportunities for Arkansas Department of Environmental Quality recycling grants.
7. Provide the quarterly "Waste News" to every Arkansas public school 4th grader via partnerships with the Arkansas Department of Education.
8. Provide in-service school recycling workshops in every county.
9. Work with Department of Education to institutionalize environmental education.

G. OTHER SERVICES - GOAL OBJECTIVES

Problems

There are limitations on funding for staff, office space, training and equipment for outreach programs.

Solutions

Provide Legislators with sufficient data and viable program background materials to ensure that funding is made available to address outreach program issues.

Section 1.205 Administrative

A. Plan Implementation

Implementing the statewide solid waste management plan is one of the most important steps in the process because the plan delineates individual actions that will support overall program objectives and goals for the ten-year period following approval of the plan.

In addition to requiring that a Statewide Solid Waste Management Plan be developed, Act 1376 of 2001, codified as A.C.A. §8-6-1901 et seq., also requires that Regional Plans be submitted by Regional Solid Waste Management Boards within one (1) year after the Statewide Solid Waste Management Plan becomes final.

Regional plans, which must be submitted for departmental review and approval, must contain, at the least, the minimum requirements contained in the Statewide Solid Waste Management Plan.

The Statewide Solid Waste Management Plan will not be entirely effective until Regional Solid Waste Management Boards have developed and are implementing regional solid waste management plans.

To show a more true structure of solid waste management in Arkansas, the formatting of Regional District Plans shall be required to be as consistent with other District plans as possible, but shall be different in the sense that each plan shall be cognizant of the unique needs of the individual District.

District Plans shall be integrated into the Statewide Solid Waste Management Plan and summarized to give an overall picture of integrated solid waste management throughout Arkansas following receipt and approval of all District plans.

B. Time Table for Implementation

The Statewide Solid Waste Management Plan follows the ten-year Agency Strategic Plan that has been implemented by the Arkansas Department of Environmental Quality. A copy of the plan is located at www.adeq.state.ar.us.

Reporting requirements of the Department's Strategic Plan ensures that the Solid Waste Management Division report updated strategic planning amendments or changes and goal related progress. Reports are required on both annually and as requested by the Director, thereby requiring, at the least, a yearly review of the plan.

To keep current, the Statewide Solid Waste Management Plan will be amended as changes or additions occur, or as needed. Amendments will identify additions to an existing program or situation or changes needed to implement a new program. Approved amendments or changes will become addenda to the existing plan.

Barring unforeseen events, the Statewide Solid Waste Management Plan, approved as a result of this planning process, shall remain in force for a period of not more than ten years from the initial plan's approval date. During, if not before, the final year of the ten-year period from approval date, a complete review of the plan will be achieved and the plan will be rewritten in its entirety, if deemed necessary.

Following the formal comment period, the document will be reviewed and approved by the Arkansas Department of Environmental Quality. The effective date will be the approval date as shown on the cover of the final version of this document.

C. Funding (Budget)

The Arkansas Department of Environmental Quality will provide encouragement and assistance to Regional Solid Waste Management Districts to help them become more self-sufficient and self-supporting as they continue to implement procedures and utilize powers given to them by Arkansas State Statute.

Section 1.206 Legislative Studies

The Statewide Solid Waste Management Plan Task Team has, as of the date of this publication, identified the following needs for further consideration:

1. Identify options for the funding of illegal dump site eradication and corrective action projects.
2. Encourage each Regional Solid Waste Management District to hire an Illegal Dumps Control Officer.
3. Explore statewide collection of solid waste.
4. Explore mandatory collection systems or “pay-as-you-throw” systems.
5. Identify options for funding sources for statewide collection, such as a statewide sales tax that issues grants for Regional Solid Waste Management Districts that establish mandatory collection systems.
6. Explore the reduction of the amount of fees landfills submit to the Arkansas Department of Environmental Quality that support recycling and solid waste management programs.
7. Amend Arkansas State Statute regarding household disposal on private property contingent on a statewide collection system.
8. Redefine duties and powers of the Regional Solid Waste Management Boards and clarify statutory and regulatory language.
9. Define “adequate” collection.
10. Amend A.C.A. §8-6-716 regarding the updating of regional needs assessments.
11. Study environmental education venues on a statewide level.

End
(Followed by Appendices)